



February 6, 2024

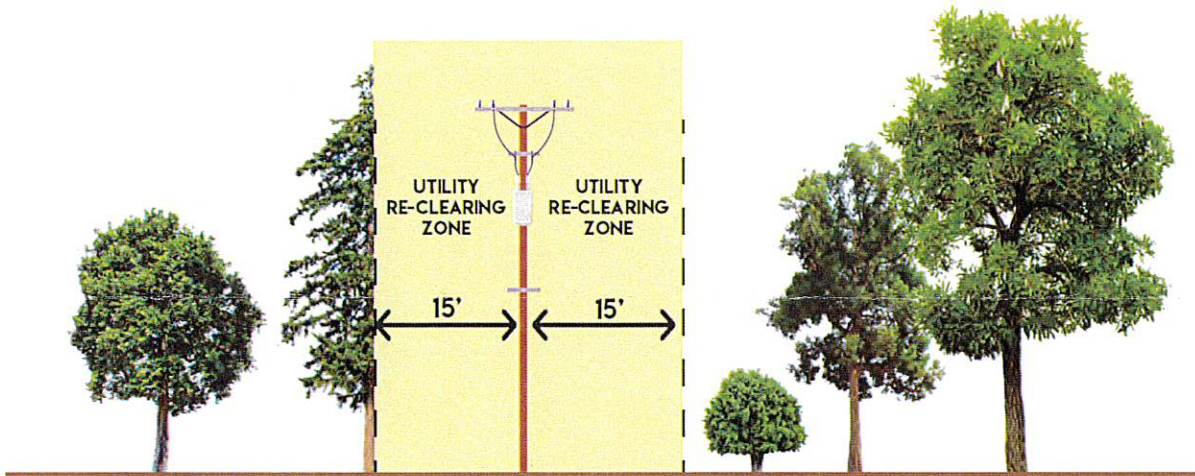
In New Hampshire trees are the #1 cause of power outages. That's why New Hampshire Electric Cooperative (NHEC) is continually re-clearing and maintaining the "rights-of-way" where our power lines run.

PLEASE NOTE A RIGHT-OF-WAY RE-CLEARING PROJECT IS SCHEDULED IN YOUR SERVICE OR PROPERTY AREA IN THE 2024 CALENDAR YEAR.

If you are a NHEC member, you will receive an automated phone call prior to the start of the re-clearing project. To ensure you receive our call, please make sure we have an updated phone number associated with your account. **To update or confirm your phone number, please call us at 1 (800) 698-2007 or email solutions@nhec.com**

What you can expect

Under the supervision of our arborists, qualified tree service companies are contracted to clear NHEC rights-of-way. We re-clear 15 feet on both sides of the distribution power line, ground to sky. In some instances, we may cut further to make a proper arboricultural cut. While performing our re-clearing NHEC tree contractors will evaluate your service line. If there is apparent wear or hard contact showing on the service line to your house, the area will be minimally trimmed.



Tree crews most commonly use mechanical methods like chainsaws, mowers, mechanical trimmers, bucket trucks and chippers to clear brush, trees, and limbs from the right-of-way corridor. Read more about NHEC's rights-of-way maintenance at www.nhec.com/vegetation.

For questions email us at vegetationmanagement@nhec.com, or call NHEC's member solutions team at 1 (800) 698-2007.

Thank you!